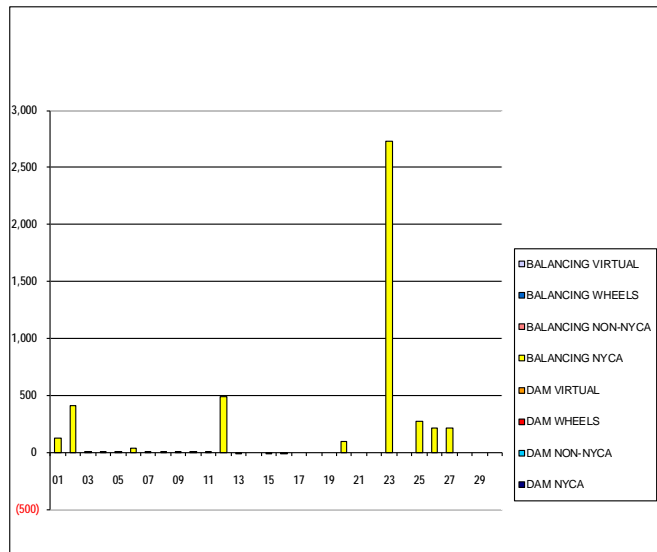


SETTLEMENTS REPORT  
November 2020 Settlement Adjustment  
December 7, 2020

Initial – Market Supply Delta Analysis

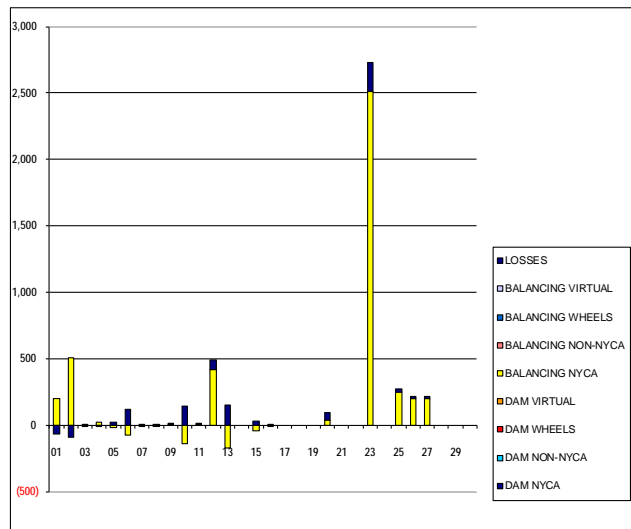
	MONDAY	TUESDAY	WEDNESDAY	THURSDAY	FRIDAY	SATURDAY	SUNDAY
DAM NYCA							1
DAM NON-NYCA							0
DAM WHEELS							0
DAM VIRTUAL							0
BALANCING NYCA							128
BALANCING NON-NYCA							0
BALANCING WHEELS							0
BALANCING VIRTUAL							0
	2	3	4	5	6	7	8
DAM NYCA	0	0	0	0	0	0	0
DAM NON-NYCA	0	0	0	0	0	0	0
DAM WHEELS	0	0	0	0	0	0	0
DAM VIRTUAL	0	0	0	0	0	0	0
BALANCING NYCA	413	2	7	4	39	1	0
BALANCING NON-NYCA	0	0	0	0	0	0	0
BALANCING WHEELS	0	0	0	0	0	0	0
BALANCING VIRTUAL	0	0	0	0	0	0	0
	9	10	11	12	13	14	15
DAM NYCA	0	0	0	0	0	0	0
DAM NON-NYCA	0	0	0	0	0	0	0
DAM WHEELS	0	0	0	0	0	0	0
DAM VIRTUAL	0	0	0	0	0	0	0
BALANCING NYCA	1	3	3	490	(16)	0	(14)
BALANCING NON-NYCA	0	0	0	0	0	0	0
BALANCING WHEELS	0	0	0	0	0	0	0
BALANCING VIRTUAL	0	0	0	0	0	0	0
	16	17	18	19	20	21	22
DAM NYCA	0	0	0	0	0	0	0
DAM NON-NYCA	0	0	0	0	0	0	0
DAM WHEELS	0	0	0	0	0	0	0
DAM VIRTUAL	0	0	0	0	0	0	0
BALANCING NYCA	(0)	0	0	0	98	0	0
BALANCING NON-NYCA	0	0	0	0	0	0	0
BALANCING WHEELS	0	0	0	0	0	0	0
BALANCING VIRTUAL	0	0	0	0	0	0	0
	23	24	25	26	27	28	29
DAM NYCA	0	0	0	0	0	0	0
DAM NON-NYCA	0	0	0	0	0	0	0
DAM WHEELS	0	0	0	0	0	0	0
DAM VIRTUAL	0	0	0	0	0	0	0
BALANCING NYCA	2,732	0	270	214	215	0	0
BALANCING NON-NYCA	0	0	0	0	0	0	0
BALANCING WHEELS	0	0	0	0	0	0	0
BALANCING VIRTUAL	0	0	0	0	0	0	0
	30						
DAM NYCA	0						
DAM NON-NYCA	0						
DAM WHEELS	0						
DAM VIRTUAL	0						
BALANCING NYCA	0						
BALANCING NON-NYCA	0						
BALANCING WHEELS	0						
BALANCING VIRTUAL	0						



SETTLEMENTS REPORT  
November 2020 Settlement Adjustment  
December 7, 2020

**Initial – Market Withdrawals Delta Analysis**

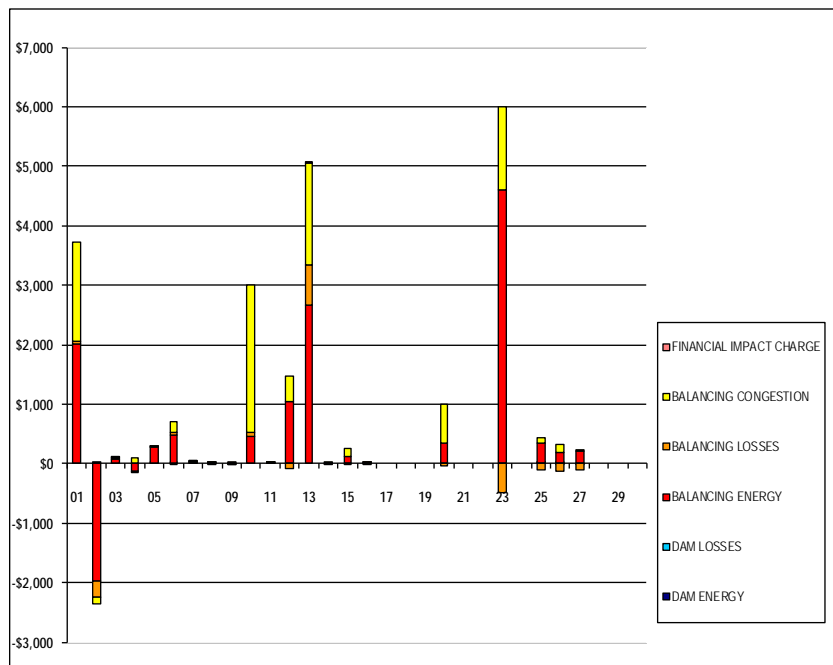
	MONDAY	TUESDAY	WEDNESDAY	THURSDAY	FRIDAY	SATURDAY	SUNDAY
DAM NYCA							1
DAM NON-NYCA							0
DAM WHEELS							0
DAM VIRTUAL							0
BALANCING NYCA							199
BALANCING NON-NYCA							0
BALANCING WHEELS							0
BALANCING VIRTUAL							0
UFE/LOSSES							(71)
	2	3	4	5	6	7	8
DAM NYCA	0	0	0	0	0	0	0
DAM NON-NYCA	0	0	0	0	0	0	0
DAM WHEELS	0	0	0	0	0	0	0
DAM VIRTUAL	0	0	0	0	0	0	0
BALANCING NYCA	506	(3)	21	(19)	(76)	(3)	0
BALANCING NON-NYCA	0	0	0	0	0	0	0
BALANCING WHEELS	0	0	0	0	0	0	0
BALANCING VIRTUAL	0	0	0	0	0	0	0
UFE/LOSSES	(93)	5	(14)	23	116	4	(0)
	9	10	11	12	13	14	15
DAM NYCA	0	0	0	0	0	0	0
DAM NON-NYCA	0	0	0	0	0	0	0
DAM WHEELS	0	0	0	0	0	0	0
DAM VIRTUAL	0	0	0	0	0	0	0
BALANCING NYCA	1	(141)	3	421	(170)	0	(40)
BALANCING NON-NYCA	0	0	0	0	0	0	0
BALANCING WHEELS	0	0	0	0	0	0	0
BALANCING VIRTUAL	0	0	0	0	0	0	0
UFE/LOSSES	0	144	0	68	154	0	27
	16	17	18	19	20	21	22
DAM NYCA	0	0	0	0	0	0	0
DAM NON-NYCA	0	0	0	0	0	0	0
DAM WHEELS	0	0	0	0	0	0	0
DAM VIRTUAL	0	0	0	0	0	0	0
BALANCING NYCA	(0)	0	0	0	39	0	0
BALANCING NON-NYCA	0	0	0	0	0	0	0
BALANCING WHEELS	0	0	0	0	0	0	0
BALANCING VIRTUAL	0	0	0	0	0	0	0
UFE/LOSSES	0	0	0	0	59	0	0
	23	24	25	26	27	28	29
DAM NYCA	0	0	0	0	0	0	0
DAM NON-NYCA	0	0	0	0	0	0	0
DAM WHEELS	0	0	0	0	0	0	0
DAM VIRTUAL	0	0	0	0	0	0	0
BALANCING NYCA	2,509	0	250	202	203	0	0
BALANCING NON-NYCA	0	0	0	0	0	0	0
BALANCING WHEELS	0	0	0	0	0	0	0
BALANCING VIRTUAL	0	0	0	0	0	0	0
UFE/LOSSES	223	0	20	12	12	0	0
	30						
DAM NYCA	0						
DAM NON-NYCA	0						
DAM WHEELS	0						
DAM VIRTUAL	0						
BALANCING NYCA	0						
BALANCING NON-NYCA	0						
BALANCING WHEELS	0						
BALANCING VIRTUAL	0						
UFE/LOSSES	0						



SETTLEMENTS REPORT  
November 2020 Settlement Adjustment  
December 7, 2020

Initial – Market Residuals Delta Analysis

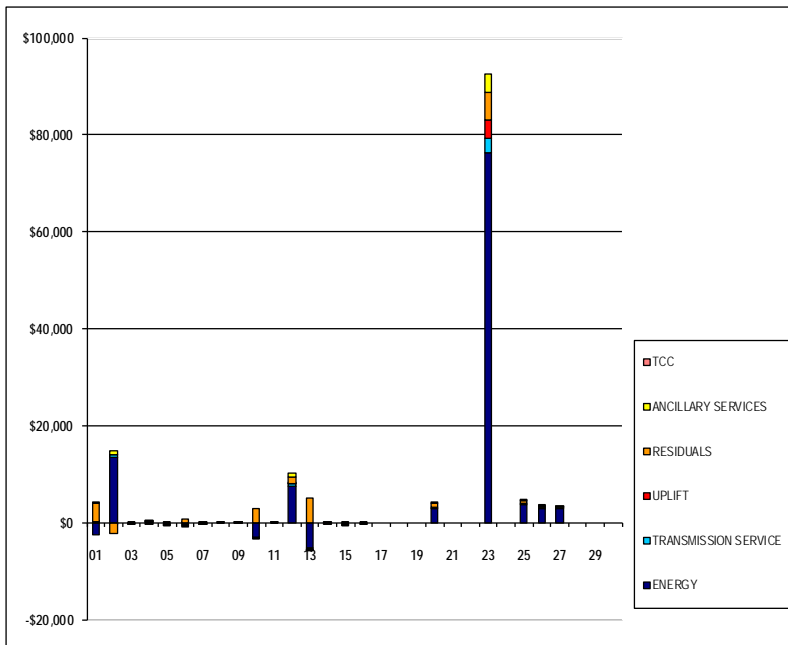
	MONDAY	TUESDAY	WEDNESDAY	THURSDAY	FRIDAY	SATURDAY	SUNDAY
							1
DAM ENERGY							\$0.00
DAM LOSSES							\$0.00
BALANCING ENERGY							\$2,017.36
BALANCING LOSSES							\$40.25
BALANCING CONGESTION							\$1,656.34
FINANCIAL IMPACT CHARGE							\$0.00
	2	3	4	5	6	7	8
DAM ENERGY	\$0.00	\$0.00	\$0.00	\$0.01	(\$0.01)	\$0.01	\$0.00
DAM LOSSES	\$0.01	\$0.00	\$0.00	\$0.00	\$0.01	\$0.00	\$0.01
BALANCING ENERGY	(\$1,965.20)	\$84.62	(\$124.50)	\$275.70	\$487.14	\$20.66	\$0.14
BALANCING LOSSES	(\$273.34)	\$11.40	(\$3.27)	\$4.98	\$41.31	\$2.25	(\$0.13)
BALANCING CONGESTION	(\$122.42)	\$6.54	\$98.64	\$2.10	\$173.05	\$6.09	\$0.01
FINANCIAL IMPACT CHARGE	\$0.00	\$0.00	\$0.00	\$0.00	\$0.00	\$0.00	\$0.00
	9	10	11	12	13	14	15
DAM ENERGY	\$0.00	\$0.00	\$0.01	\$0.00	\$0.00	\$0.00	\$0.00
DAM LOSSES	\$0.00	\$0.00	\$0.00	\$0.00	\$0.00	\$0.00	\$0.00
BALANCING ENERGY	(\$0.12)	\$462.70	\$0.04	\$1,033.08	\$2,656.21	(\$0.28)	\$128.51
BALANCING LOSSES	\$2.85	\$52.64	\$0.23	(\$76.69)	\$677.23	\$0.00	(\$0.69)
BALANCING CONGESTION	(\$1.44)	\$2,488.74	\$2.02	\$446.59	\$1,709.86	\$0.01	\$122.64
FINANCIAL IMPACT CHARGE	\$0.00	\$0.00	\$0.00	\$0.00	\$0.04	\$0.00	\$0.00
	16	17	18	19	20	21	22
DAM ENERGY	\$0.01	\$0.00	\$0.00	\$0.00	(\$0.01)	\$0.00	\$0.00
DAM LOSSES	\$0.00	\$0.00	\$0.00	\$0.00	\$0.01	\$0.00	\$0.00
BALANCING ENERGY	\$3.35	\$0.00	\$0.00	\$0.00	\$347.80	\$0.00	\$0.00
BALANCING LOSSES	\$0.52	\$0.00	\$0.00	\$0.00	(\$44.11)	\$0.00	\$0.00
BALANCING CONGESTION	(\$5.58)	\$0.00	\$0.00	\$0.00	\$660.47	\$0.00	\$0.00
FINANCIAL IMPACT CHARGE	\$0.00	\$0.00	\$0.00	\$0.00	\$0.00	\$0.00	\$0.00
	23	24	25	26	27	28	29
DAM ENERGY	\$0.00	\$0.00	\$0.01	\$0.01	\$0.00	\$0.00	\$0.00
DAM LOSSES	\$0.00	\$0.00	\$0.01	(\$0.01)	(\$0.01)	\$0.00	\$0.00
BALANCING ENERGY	\$4,610.57	\$0.00	\$346.00	\$192.20	\$201.37	\$0.00	\$0.00
BALANCING LOSSES	(\$488.31)	\$0.00	(\$108.43)	(\$130.92)	(\$108.81)	\$0.00	\$0.00
BALANCING CONGESTION	\$1,387.04	\$0.00	\$92.53	\$140.18	\$26.21	\$0.00	\$0.00
FINANCIAL IMPACT CHARGE	\$0.00	\$0.00	\$0.00	\$0.00	\$0.00	\$0.00	\$0.00
	30						
DAM ENERGY	\$0.00						
DAM LOSSES	\$0.00						
BALANCING ENERGY	\$0.00						
BALANCING LOSSES	\$0.00						
BALANCING CONGESTION	\$0.00						
FINANCIAL IMPACT CHARGE	\$0.00						



SETTLEMENTS REPORT  
November 2020 Settlement Adjustment  
December 7, 2020

Initial – Market Costs Delta Analysis

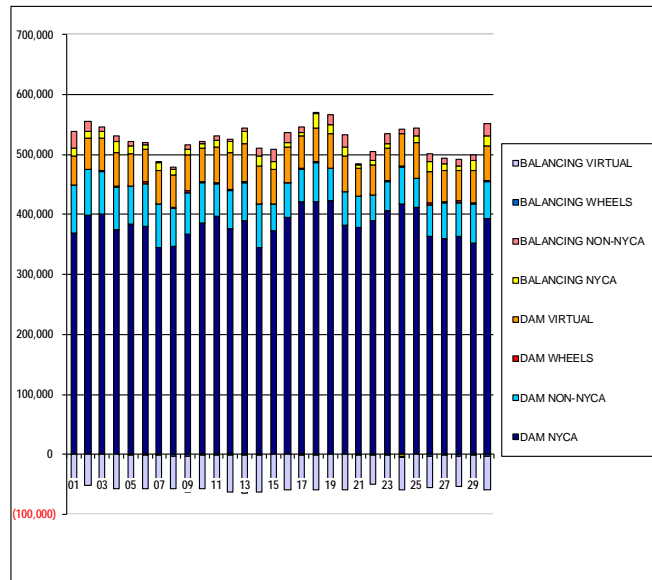
	MONDAY	TUESDAY	WEDNESDAY	THURSDAY	FRIDAY	SATURDAY	SUNDAY
							1
ENERGY							(\$2,656.03)
TRANSMISSION SERVICE							\$226.75
UPLIFT							\$30.96
RESIDUALS							\$3,713.95
ANCILLARY SERVICES							\$299.92
TCC							\$0.00
	2	3	4	5	6	7	8
ENERGY	\$13,512.20	(\$70.22)	\$103.06	(\$242.95)	(\$453.59)	(\$22.82)	\$1.73
TRANSMISSION SERVICE	\$576.26	(\$3.19)	\$23.80	(\$22.11)	(\$87.15)	(\$3.44)	\$0.37
UPLIFT	(\$0.01)	(\$0.01)	\$0.00	(\$0.01)	\$0.02	(\$0.01)	\$0.00
RESIDUALS	(\$2,360.95)	\$102.56	(\$29.13)	\$282.79	\$701.50	\$29.01	\$0.03
ANCILLARY SERVICES	\$793.12	(\$2.86)	\$28.52	(\$23.40)	(\$84.37)	(\$3.53)	\$0.49
TCC	\$0.00	\$0.00	\$0.00	\$0.00	\$0.00	\$0.00	\$0.00
	9	10	11	12	13	14	15
ENERGY	\$5.14	(\$2,997.18)	\$7.07	\$7,510.98	(\$5,224.60)	\$0.35	(\$236.40)
TRANSMISSION SERVICE	\$1.45	(\$160.71)	\$3.64	\$480.38	(\$193.94)	\$0.01	(\$45.96)
UPLIFT	\$0.00	\$0.01	\$0.00	\$35.77	(\$0.01)	\$0.00	\$0.00
RESIDUALS	\$1.29	\$3,004.08	\$2.30	\$1,402.98	\$5,043.34	(\$0.27)	\$250.46
ANCILLARY SERVICES	\$1.99	(\$177.37)	\$5.01	\$638.85	(\$200.19)	\$0.00	(\$63.42)
TCC	\$0.00	\$0.00	\$0.00	\$0.00	\$0.00	\$0.00	\$0.00
	16	17	18	19	20	21	22
ENERGY	\$9.54	\$0.00	\$0.00	\$0.00	\$2,994.61	\$0.00	\$0.00
TRANSMISSION SERVICE	(\$0.45)	\$0.00	\$0.00	\$0.00	\$44.35	\$0.00	\$0.00
UPLIFT	\$0.00	\$0.00	\$0.00	\$0.00	\$0.00	\$0.00	\$0.00
RESIDUALS	(\$1.70)	\$0.00	\$0.00	\$0.00	\$964.16	\$0.00	\$0.00
ANCILLARY SERVICES	(\$0.54)	\$0.00	\$0.00	\$0.00	\$78.62	\$0.00	\$0.00
TCC	\$0.00	\$0.00	\$0.00	\$0.00	\$0.00	\$0.00	\$0.00
	23	24	25	26	27	28	29
ENERGY	\$76,432.52	\$0.00	\$3,821.16	\$3,016.92	\$2,880.51	\$0.00	\$0.00
TRANSMISSION SERVICE	\$2,860.36	\$0.00	\$284.78	\$230.77	\$231.39	\$0.00	\$0.00
UPLIFT	\$3,852.62	\$0.00	\$0.00	\$0.01	\$0.00	\$0.00	\$0.00
RESIDUALS	\$5,509.30	\$0.00	\$330.12	\$201.46	\$118.76	\$0.00	\$0.00
ANCILLARY SERVICES	\$3,936.75	\$0.00	\$397.70	\$321.47	\$322.14	\$0.00	\$0.00
TCC	\$0.00	\$0.00	\$0.00	\$0.00	\$0.00	\$0.00	\$0.00
	30						
ENERGY	\$0.00						
TRANSMISSION SERVICE	\$0.00						
UPLIFT	\$0.00						
RESIDUALS	\$0.00						
ANCILLARY SERVICES	\$0.00						
TCC	\$0.00						



SETTLEMENTS REPORT  
November 2020 Settlement Adjustment  
December 7, 2020

Weekly Settlement – Market Supply Analysis

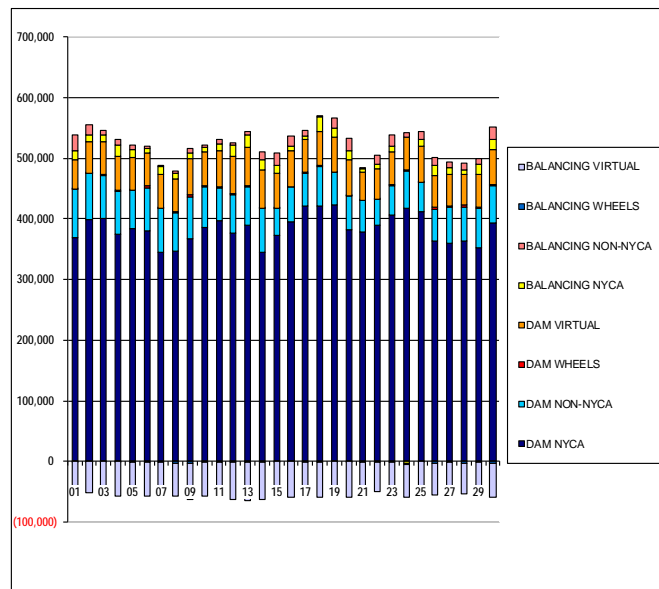
	MONDAY	TUESDAY	WEDNESDAY	THURSDAY	FRIDAY	SATURDAY	SUNDAY
							1
DAM NYCA							369,967
DAM NON-NYCA							78,647
DAM WHEELS							105
DAM VIRTUAL							49,580
BALANCING NYCA							13,402
BALANCING NON-NYCA							26,179
BALANCING WHEELS							(71)
BALANCING VIRTUAL							(49,580)
	2	3	4	5	6	7	8
DAM NYCA	398,399	400,211	374,277	383,830	380,520	345,648	346,086
DAM NON-NYCA	76,416	71,263	72,185	63,659	71,463	71,207	63,442
DAM WHEELS	382	1,622	162	772	2,090	1,688	2,806
DAM VIRTUAL	51,852	54,603	57,551	52,891	55,551	55,627	54,154
BALANCING NYCA	11,640	11,341	17,902	13,688	7,145	13,012	8,748
BALANCING NON-NYCA	17,021	8,077	8,437	7,142	3,204	1,852	3,703
BALANCING WHEELS	(214)	(461)	(145)	(772)	(1,922)	(1,688)	(2,806)
BALANCING VIRTUAL	(51,852)	(54,603)	(57,551)	(52,891)	(55,551)	(55,627)	(54,154)
	9	10	11	12	13	14	15
DAM NYCA	367,179	386,100	396,365	377,155	388,906	345,248	373,716
DAM NON-NYCA	69,748	66,557	54,725	62,854	65,112	72,411	44,079
DAM WHEELS	2,582	1,516	1,582	1,899	756	932	161
DAM VIRTUAL	60,810	56,711	59,098	61,433	64,182	61,616	58,298
BALANCING NYCA	8,091	7,128	12,619	17,840	19,665	18,358	12,677
BALANCING NON-NYCA	8,274	4,624	7,457	4,202	5,782	12,215	20,376
BALANCING WHEELS	(2,582)	(1,516)	(1,582)	(1,899)	(756)	(932)	(161)
BALANCING VIRTUAL	(60,810)	(56,711)	(59,098)	(61,433)	(64,182)	(61,616)	(58,298)
	16	17	18	19	20	21	22
DAM NYCA	394,980	421,637	422,093	422,409	382,788	378,040	389,594
DAM NON-NYCA	57,223	53,817	64,104	54,118	55,082	52,632	42,231
DAM WHEELS	528	1,441	1,438	46	407	790	1,262
DAM VIRTUAL	59,227	55,091	57,276	58,166	59,234	45,447	49,155
BALANCING NYCA	8,778	4,186	24,141	14,425	14,942	6,299	8,989
BALANCING NON-NYCA	16,081	9,937	1,095	17,365	20,036	1,612	13,704
BALANCING WHEELS	(528)	(1,381)	(1,388)	(46)	(407)	(790)	(1,262)
BALANCING VIRTUAL	(59,227)	(55,091)	(57,276)	(58,166)	(59,234)	(45,447)	(49,155)
	23	24	25	26	27	28	29
DAM NYCA	406,245	417,129	412,590	363,621	359,107	363,206	351,800
DAM NON-NYCA	49,195	62,044	48,223	52,914	59,963	56,929	65,085
DAM WHEELS	1,003	1,377	420	2,539	1,922	2,705	1,792
DAM VIRTUAL	54,751	53,772	58,295	52,612	52,391	50,809	54,160
BALANCING NYCA	7,007	(3,429)	11,322	17,118	11,382	8,187	17,764
BALANCING NON-NYCA	17,023	8,137	12,834	12,408	9,286	11,173	8,780
BALANCING WHEELS	(1,003)	(1,317)	(420)	(2,539)	(1,922)	(2,705)	(1,792)
BALANCING VIRTUAL	(54,751)	(53,772)	(58,295)	(52,612)	(52,391)	(50,809)	(54,160)
	30						
DAM NYCA	394,274						
DAM NON-NYCA	60,164						
DAM WHEELS	3,036						
DAM VIRTUAL	56,710						
BALANCING NYCA	17,291						
BALANCING NON-NYCA	19,944						
BALANCING WHEELS	(2,411)						
BALANCING VIRTUAL	(56,710)						



SETTLEMENTS REPORT  
November 2020 Settlement Adjustment  
December 7, 2020

Initial Settlement Adjustment – Market Supply Analysis

	MONDAY	TUESDAY	WEDNESDAY	THURSDAY	FRIDAY	SATURDAY	SUNDAY
							1
DAM NYCA							369,967
DAM NON-NYCA							78,647
DAM WHEELS							105
DAM VIRTUAL							49,580
BALANCING NYCA							13,530
BALANCING NON-NYCA							26,179
BALANCING WHEELS							(71)
BALANCING VIRTUAL							(49,580)
	2	3	4	5	6	7	8
DAM NYCA	398,399	400,211	374,277	383,830	380,520	345,648	346,086
DAM NON-NYCA	76,416	71,263	72,185	63,659	71,463	71,207	63,442
DAM WHEELS	382	1,622	162	772	2,090	1,688	2,806
DAM VIRTUAL	51,852	54,603	57,551	52,891	55,551	55,627	54,154
BALANCING NYCA	12,053	11,343	17,909	13,692	7,184	13,015	8,748
BALANCING NON-NYCA	17,021	8,077	8,437	7,142	3,204	1,852	3,703
BALANCING WHEELS	(214)	(461)	(145)	(772)	(1,922)	(1,688)	(2,806)
BALANCING VIRTUAL	(51,852)	(54,603)	(57,551)	(52,891)	(55,551)	(55,627)	(54,154)
	9	10	11	12	13	14	15
DAM NYCA	367,179	386,100	396,365	377,155	388,906	345,248	373,716
DAM NON-NYCA	69,748	66,557	54,725	62,854	65,112	72,411	44,079
DAM WHEELS	2,582	1,516	1,582	1,899	756	932	161
DAM VIRTUAL	60,810	56,711	59,098	61,433	64,182	61,616	58,298
BALANCING NYCA	8,093	7,131	12,622	18,330	19,649	18,358	12,663
BALANCING NON-NYCA	8,274	4,624	7,457	4,202	5,782	12,215	20,376
BALANCING WHEELS	(2,582)	(1,516)	(1,582)	(1,899)	(756)	(932)	(161)
BALANCING VIRTUAL	(60,810)	(56,711)	(59,098)	(61,433)	(64,182)	(61,616)	(58,298)
	16	17	18	19	20	21	22
DAM NYCA	394,980	421,637	422,093	422,409	382,788	378,040	389,594
DAM NON-NYCA	57,223	53,817	64,104	54,118	55,082	52,632	42,231
DAM WHEELS	528	1,441	1,438	46	407	790	1,262
DAM VIRTUAL	59,227	55,091	57,276	58,166	59,234	45,447	49,155
BALANCING NYCA	8,778	4,186	24,141	14,425	15,040	6,299	8,989
BALANCING NON-NYCA	16,081	9,937	1,095	17,365	20,036	1,612	13,704
BALANCING WHEELS	(528)	(1,441)	(1,438)	(46)	(407)	(790)	(1,262)
BALANCING VIRTUAL	(59,227)	(55,091)	(57,276)	(58,166)	(59,234)	(45,447)	(49,155)
	23	24	25	26	27	28	29
DAM NYCA	406,245	417,129	412,590	363,621	359,107	363,206	351,800
DAM NON-NYCA	49,195	62,044	48,223	52,914	59,963	56,929	65,085
DAM WHEELS	1,003	1,377	420	2,539	1,922	2,705	1,792
DAM VIRTUAL	54,751	53,772	58,295	52,612	52,391	50,809	54,160
BALANCING NYCA	9,740	(3,429)	11,592	17,332	11,597	8,187	17,764
BALANCING NON-NYCA	17,023	8,137	12,834	12,408	9,286	11,173	8,780
BALANCING WHEELS	(1,003)	(1,317)	(420)	(2,539)	(1,922)	(2,705)	(1,792)
BALANCING VIRTUAL	(54,751)	(53,772)	(58,295)	(52,612)	(52,391)	(50,809)	(54,160)
	30						
DAM NYCA	394,274						
DAM NON-NYCA	60,164						
DAM WHEELS	3,036						
DAM VIRTUAL	56,710						
BALANCING NYCA	17,291						
BALANCING NON-NYCA	19,944						
BALANCING WHEELS	(2,411)						
BALANCING VIRTUAL	(56,710)						

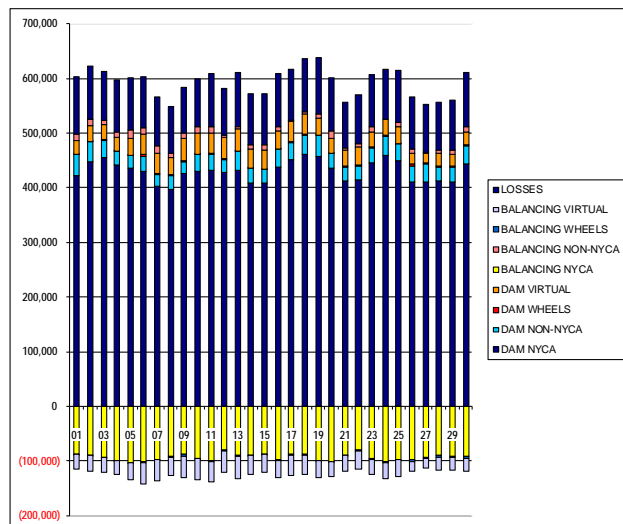




SETTLEMENTS REPORT  
November 2020 Settlement Adjustment  
December 7, 2020

Initial Settlement Adjustment – Market Withdrawals Analysis

	MONDAY	TUESDAY	WEDNESDAY	THURSDAY	FRIDAY	SATURDAY	SUNDAY
							1
DAM NYCA							421,727
DAM NON-NYCA							38,760
DAM WHEELS							105
DAM VIRTUAL							26,130
BALANCING NYCA							(87,565)
BALANCING NON-NYCA							10,535
BALANCING WHEELS							(71)
BALANCING VIRTUAL							(26,130)
UFE/LOSSES							104,867
	2	3	4	5	6	7	8
DAM NYCA	448,040	454,510	441,085	435,702	429,037	402,232	397,111
DAM NON-NYCA	36,150	32,231	25,984	23,305	28,998	22,387	24,075
DAM WHEELS	382	1,622	162	772	2,090	1,688	2,806
DAM VIRTUAL	29,793	27,182	25,568	29,766	37,850	37,225	32,024
BALANCING NYCA	(88,872)	(92,648)	(99,535)	(103,018)	(101,481)	(96,406)	(91,061)
BALANCING NON-NYCA	9,997	7,238	9,623	17,115	12,536	13,870	7,829
BALANCING WHEELS	(714)	(461)	(145)	(772)	(1,922)	(1,688)	(2,806)
BALANCING VIRTUAL	(29,793)	(27,182)	(25,568)	(29,766)	(37,850)	(37,225)	(32,024)
UFE/LOSSES	98,574	89,563	95,650	95,219	93,281	89,637	84,025
	9	10	11	12	13	14	15
DAM NYCA	426,159	429,061	431,901	428,173	431,264	407,594	407,787
DAM NON-NYCA	21,074	31,300	29,382	23,857	35,621	27,901	26,473
DAM WHEELS	2,582	1,516	1,582	1,899	756	932	161
DAM VIRTUAL	40,165	38,444	37,815	37,969	40,863	33,938	33,619
BALANCING NYCA	(88,036)	(94,549)	(98,641)	(79,821)	(89,801)	(89,247)	(86,550)
BALANCING NON-NYCA	10,866	10,372	10,239	4,446	3,877	7,470	9,860
BALANCING WHEELS	(2,582)	(1,516)	(1,582)	(1,899)	(756)	(932)	(161)
BALANCING VIRTUAL	(40,165)	(38,444)	(37,815)	(37,969)	(40,863)	(33,938)	(33,619)
UFE/LOSSES	83,230	88,229	98,288	85,886	98,488	94,514	93,265
	16	17	18	19	20	21	22
DAM NYCA	437,002	450,754	460,685	458,003	435,340	412,825	415,167
DAM NON-NYCA	33,178	32,665	36,295	38,466	27,039	25,607	24,067
DAM WHEELS	528	1,441	1,438	46	407	790	1,262
DAM VIRTUAL	32,597	37,348	36,470	30,010	26,490	29,037	32,790
BALANCING NYCA	(97,882)	(87,769)	(87,281)	(99,706)	(101,394)	(88,759)	(80,545)
BALANCING NON-NYCA	7,611	2,069	3,696	8,292	14,943	3,623	6,858
BALANCING WHEELS	(528)	(1,381)	(1,388)	(46)	(407)	(790)	(1,262)
BALANCING VIRTUAL	(32,597)	(37,348)	(36,470)	(30,010)	(26,490)	(29,037)	(32,790)
UFE/LOSSES	97,152	91,858	98,039	103,261	97,019	85,286	88,171
	23	24	25	26	27	28	29
DAM NYCA	445,998	458,790	448,692	410,122	411,270	412,754	411,308
DAM NON-NYCA	27,172	35,176	31,032	30,432	32,521	24,103	25,594
DAM WHEELS	1,003	1,377	420	2,539	1,922	2,705	1,792
DAM VIRTUAL	27,932	30,374	30,959	19,088	17,669	23,576	23,112
BALANCING NYCA	(95,285)	(100,696)	(97,454)	(97,925)	(93,486)	(89,740)	(91,782)
BALANCING NON-NYCA	10,187	(447)	7,948	7,789	800	5,335	7,696
BALANCING WHEELS	(1,003)	(1,317)	(420)	(2,539)	(1,922)	(2,705)	(1,792)
BALANCING VIRTUAL	(27,932)	(30,374)	(30,959)	(19,088)	(17,669)	(23,576)	(23,112)
UFE/LOSSES	94,130	91,057	95,020	95,857	88,849	87,043	90,613
	30						
DAM NYCA	444,063						
DAM NON-NYCA	32,290						
DAM WHEELS	3,036						
DAM VIRTUAL	23,442						
BALANCING NYCA	(92,153)						
BALANCING NON-NYCA	8,824						
BALANCING WHEELS	(2,411)						
BALANCING VIRTUAL	(23,442)						
UFE/LOSSES	98,649						

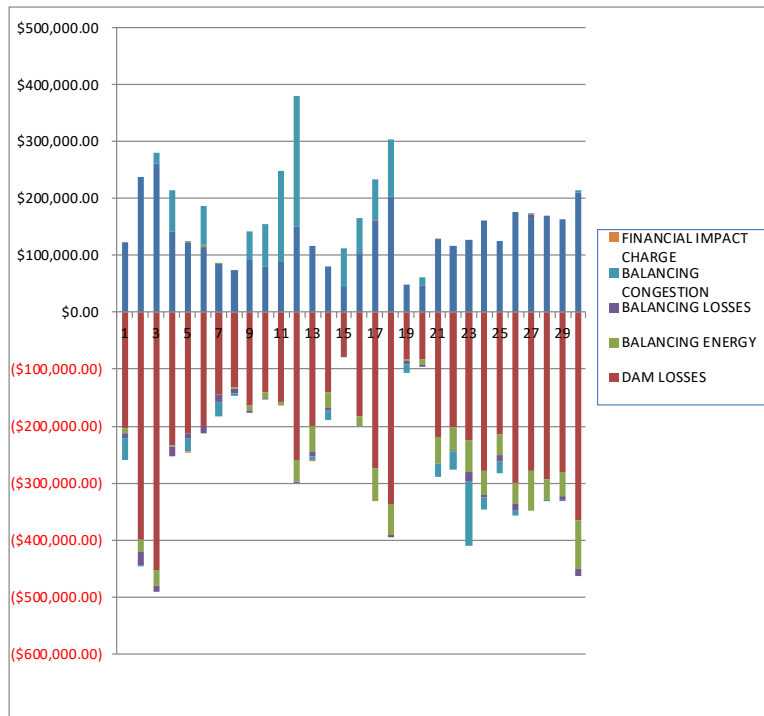




SETTLEMENTS REPORT  
November 2020 Settlement Adjustment  
December 7, 2020

Weekly Settlement – Market Residuals Analysis

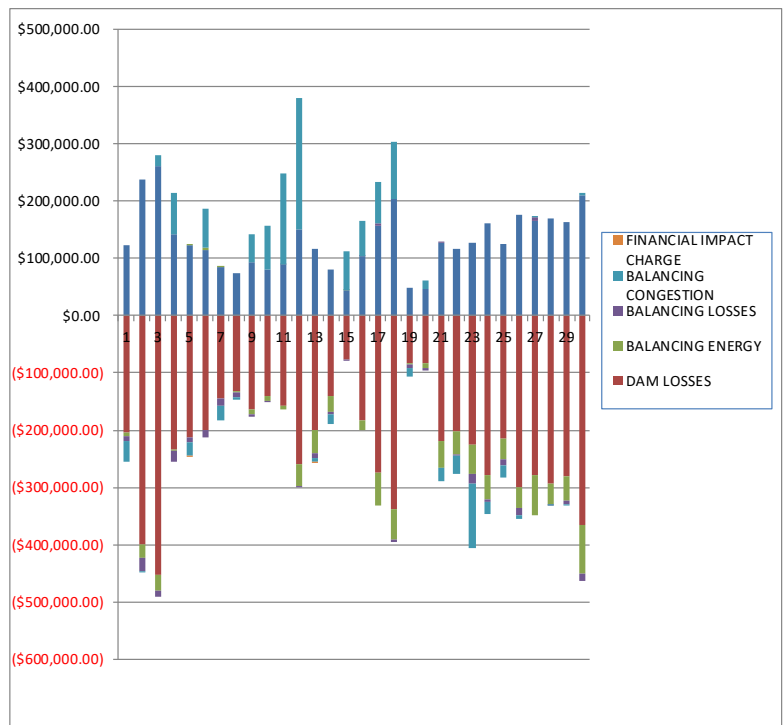
	MONDAY	TUESDAY	WEDNESDAY	THURSDAY	FRIDAY	SATURDAY	SUNDAY
							1
DAM ENERGY							\$122,386.04
DAM LOSSES							(\$204,244.37)
BALANCING ENERGY							(\$7,850.69)
BALANCING LOSSES							(\$9,976.00)
BALANCING CONGESTION							(\$37,815.90)
FINANCIAL IMPACT CHARGE							\$0.00
	2	3	4	5	6	7	8
DAM ENERGY	\$237,879.54	\$260,697.60	\$142,136.53	\$122,125.45	\$115,240.65	\$84,364.66	\$73,553.23
DAM LOSSES	(\$399,504.13)	(\$451,989.28)	(\$233,480.96)	(\$213,270.47)	(\$201,040.45)	(\$145,701.39)	(\$132,874.31)
BALANCING ENERGY	(\$21,532.54)	(\$29,093.29)	(\$2,606.73)	\$697.52	\$3,227.34	\$811.83	(\$2,243.27)
BALANCING LOSSES	(\$23,000.86)	(\$10,606.70)	(\$17,980.33)	(\$7,748.59)	(\$10,957.89)	(\$11,660.62)	(\$7,246.43)
BALANCING CONGESTION	(\$350.42)	\$19,576.56	\$72,010.13	(\$24,538.09)	\$67,290.93	(\$25,740.20)	(\$5,520.40)
FINANCIAL IMPACT CHARGE	\$0.00	\$0.00	\$0.00	(\$31.01)	\$0.00	\$0.00	\$0.00
	9	10	11	12	13	14	15
DAM ENERGY	\$93,430.66	\$80,672.46	\$89,412.66	\$149,582.64	\$117,185.39	\$80,319.04	\$44,048.02
DAM LOSSES	(\$164,369.86)	(\$141,002.72)	(\$158,300.90)	(\$260,313.70)	(\$199,237.12)	(\$139,995.83)	(\$75,871.06)
BALANCING ENERGY	(\$8,400.10)	(\$9,291.47)	(\$6,599.98)	(\$38,262.51)	(\$44,589.77)	(\$27,310.84)	\$362.21
BALANCING LOSSES	(\$4,755.53)	(\$796.76)	\$103.95	(\$1,510.74)	(\$9,202.43)	(\$6,023.60)	(\$2,146.25)
BALANCING CONGESTION	\$48,111.94	\$73,179.28	\$158,452.89	\$229,527.58	(\$6,542.54)	(\$15,358.71)	\$68,490.07
FINANCIAL IMPACT CHARGE	\$0.00	\$0.00	\$0.00	\$0.00	(\$83.87)	\$0.00	\$0.00
	16	17	18	19	20	21	22
DAM ENERGY	\$103,451.46	\$157,862.78	\$204,715.34	\$48,686.89	\$47,155.56	\$126,202.45	\$116,530.53
DAM LOSSES	(\$182,030.59)	(\$274,958.00)	(\$338,312.67)	(\$82,898.39)	(\$82,380.18)	(\$218,449.40)	(\$201,466.06)
BALANCING ENERGY	(\$18,194.22)	(\$56,236.16)	(\$53,247.45)	(\$2,101.95)	(\$8,739.57)	(\$46,641.51)	(\$40,118.41)
BALANCING LOSSES	\$438.33	\$4,282.91	(\$4,411.25)	(\$6,417.78)	(\$4,547.44)	\$884.99	(\$3,416.85)
BALANCING CONGESTION	\$61,737.26	\$71,049.52	\$98,394.95	(\$15,484.02)	\$13,885.80	(\$24,797.15)	(\$32,298.44)
FINANCIAL IMPACT CHARGE	\$0.00	\$0.00	\$0.00	\$0.00	\$0.00	\$0.00	\$0.00
	23	24	25	26	27	28	29
DAM ENERGY	\$128,143.11	\$160,902.50	\$124,752.91	\$175,016.14	\$165,564.04	\$169,635.18	\$164,154.20
DAM LOSSES	(\$224,788.98)	(\$277,755.34)	(\$213,900.66)	(\$299,251.63)	(\$278,678.98)	(\$292,490.06)	(\$280,436.34)
BALANCING ENERGY	(\$56,045.14)	(\$42,617.13)	(\$37,172.21)	(\$37,334.30)	(\$69,381.18)	(\$37,387.40)	(\$43,766.51)
BALANCING LOSSES	(\$15,983.21)	(\$5,990.16)	(\$11,038.36)	(\$12,318.28)	\$6,795.78	(\$611.26)	(\$5,687.75)
BALANCING CONGESTION	(\$114,159.02)	(\$19,484.52)	(\$21,336.12)	(\$7,330.65)	(\$297.24)	(\$1,023.32)	(\$867.94)
FINANCIAL IMPACT CHARGE	\$0.00	\$0.00	\$0.00	\$0.00	\$0.00	\$0.00	\$0.00
	30						
DAM ENERGY		\$210,361.61					
DAM LOSSES		(\$366,659.96)					
BALANCING ENERGY		(\$85,066.60)					
BALANCING LOSSES		(\$11,830.88)					
BALANCING CONGESTION		\$3,274.62					
FINANCIAL IMPACT CHARGE		\$0.00					



SETTLEMENTS REPORT  
November 2020 Settlement Adjustment  
December 7, 2020

Initial Settlement Adjustment – Market Residuals Analysis

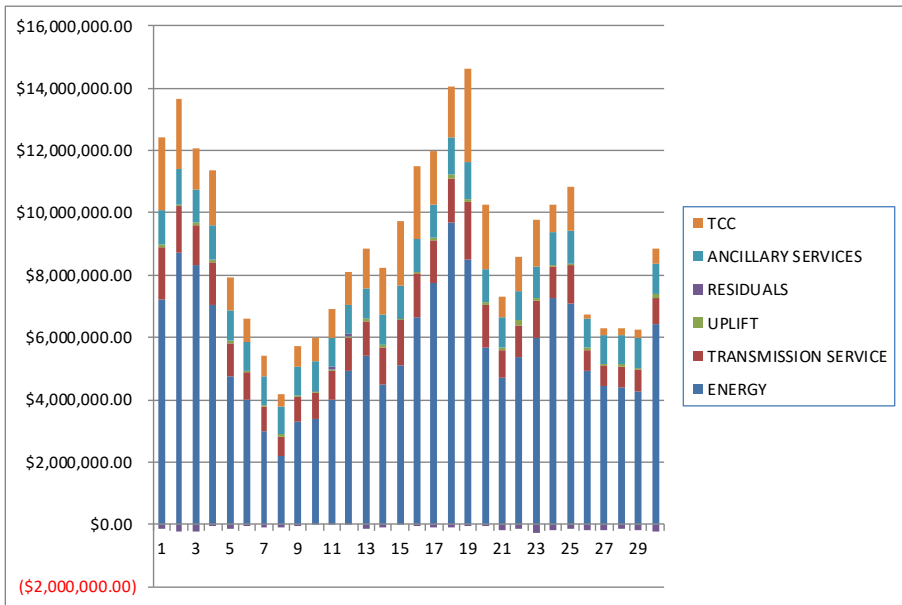
	MONDAY	TUESDAY	WEDNESDAY	THURSDAY	FRIDAY	SATURDAY	SUNDAY
							1
DAM ENERGY							\$122,386.04
DAM LOSSES							(\$204,244.37)
BALANCING ENERGY							(\$5,833.33)
BALANCING LOSSES							(\$9,935.75)
BALANCING CONGESTION							(\$36,159.56)
FINANCIAL IMPACT CHARGE							\$0.00
	2	3	4	5	6	7	8
DAM ENERGY	\$237,879.54	\$260,697.60	\$142,136.53	\$122,125.46	\$115,240.64	\$84,364.67	\$73,553.23
DAM LOSSES	(\$399,504.12)	(\$451,989.28)	(\$233,480.96)	(\$213,270.47)	(\$201,040.44)	(\$145,701.39)	(\$132,874.30)
BALANCING ENERGY	(\$23,497.74)	(\$29,008.67)	(\$2,731.23)	\$973.22	\$3,714.48	\$832.49	(\$2,243.13)
BALANCING LOSSES	(\$23,274.20)	(\$10,595.30)	(\$17,983.60)	(\$7,743.61)	(\$10,916.58)	(\$11,658.37)	(\$7,246.56)
BALANCING CONGESTION	(\$472.84)	\$19,583.10	\$72,108.77	(\$24,535.99)	\$67,463.98	(\$25,734.11)	(\$5,520.39)
FINANCIAL IMPACT CHARGE	\$0.00	\$0.00	\$0.00	(\$31.01)	\$0.00	\$0.00	\$0.00
	9	10	11	12	13	14	15
DAM ENERGY	\$93,430.66	\$80,672.46	\$89,412.67	\$149,582.64	\$117,185.39	\$80,319.04	\$44,048.02
DAM LOSSES	(\$164,369.86)	(\$141,002.72)	(\$158,300.90)	(\$260,313.70)	(\$199,237.12)	(\$139,995.83)	(\$75,871.06)
BALANCING ENERGY	(\$8,400.22)	(\$8,828.77)	(\$6,599.94)	(\$37,229.43)	(\$41,933.56)	(\$27,311.12)	\$490.72
BALANCING LOSSES	(\$4,752.68)	(\$744.12)	\$104.18	(\$1,587.43)	(\$8,525.20)	(\$6,023.60)	(\$2,146.94)
BALANCING CONGESTION	\$48,110.50	\$75,668.02	\$158,454.91	\$229,974.17	(\$4,832.68)	(\$15,358.70)	\$68,612.71
FINANCIAL IMPACT CHARGE	\$0.00	\$0.00	\$0.00	\$0.00	(\$83.83)	\$0.00	\$0.00
	16	17	18	19	20	21	22
DAM ENERGY	\$103,451.47	\$157,862.78	\$204,715.34	\$48,686.89	\$47,155.55	\$126,202.45	\$116,530.53
DAM LOSSES	(\$182,030.59)	(\$274,958.00)	(\$338,312.67)	(\$82,898.39)	(\$82,380.17)	(\$218,449.40)	(\$201,466.06)
BALANCING ENERGY	(\$18,190.87)	(\$56,236.16)	(\$53,247.45)	(\$2,101.95)	(\$8,391.77)	(\$46,641.51)	(\$40,118.41)
BALANCING LOSSES	\$438.85	\$4,282.91	(\$4,411.25)	(\$6,417.78)	(\$4,591.55)	\$884.99	(\$3,416.85)
BALANCING CONGESTION	\$61,731.68	\$71,049.52	\$98,394.95	(\$15,484.02)	\$14,546.27	(\$24,797.15)	(\$32,298.44)
FINANCIAL IMPACT CHARGE	\$0.00	\$0.00	\$0.00	\$0.00	\$0.00	\$0.00	\$0.00
	23	24	25	26	27	28	29
DAM ENERGY	\$128,143.11	\$160,902.50	\$124,752.92	\$175,016.15	\$165,564.04	\$169,635.18	\$164,154.20
DAM LOSSES	(\$224,788.98)	(\$277,755.34)	(\$213,900.65)	(\$299,251.64)	(\$278,678.99)	(\$292,490.08)	(\$280,436.34)
BALANCING ENERGY	(\$51,434.57)	(\$42,617.13)	(\$36,826.21)	(\$37,142.10)	(\$69,179.81)	(\$37,387.40)	(\$43,766.51)
BALANCING LOSSES	(\$16,471.52)	(\$5,990.16)	(\$11,146.79)	(\$12,449.20)	\$6,686.97	(\$611.26)	(\$5,687.75)
BALANCING CONGESTION	(\$112,771.98)	(\$19,484.52)	(\$21,243.59)	(\$7,190.47)	\$323.45	(\$1,023.32)	(\$867.94)
FINANCIAL IMPACT CHARGE	\$0.00	\$0.00	\$0.00	\$0.00	\$0.00	\$0.00	\$0.00
	30						
DAM ENERGY	\$210,361.61						
DAM LOSSES	(\$366,659.96)						
BALANCING ENERGY	(\$85,066.60)						
BALANCING LOSSES	(\$11,830.88)						
BALANCING CONGESTION	\$3,274.62						
FINANCIAL IMPACT CHARGE	\$0.00						



SETTLEMENTS REPORT  
November 2020 Settlement Adjustment  
December 7, 2020

Weekly Settlement – Market Costs Analysis

	MONDAY	TUESDAY	WEDNESDAY	THURSDAY	FRIDAY	SATURDAY	SUNDAY
ENERGY							1
TRANSMISSION SERVICE							\$7,229,369.45
UPLIFT							\$1,647,975.37
RESIDUALS							\$108,132.25
ANCILLARY SERVICES							(\$137,500.92)
TCC							\$1,091,732.29
	2	3	4	5	6	7	8
ENERGY	\$8,721,484.97	\$8,305,954.13	\$7,038,370.45	\$4,746,190.09	\$4,009,129.90	\$2,993,349.03	\$2,175,996.97
TRANSMISSION SERVICE	\$1,492,241.65	\$1,298,491.72	\$1,350,767.52	\$1,058,929.54	\$870,975.46	\$786,470.08	\$655,149.04
UPLIFT	\$46,958.94	\$81,674.03	\$106,392.97	\$101,631.02	\$34,274.68	\$43,708.77	\$59,635.69
RESIDUALS	(\$206,508.41)	(\$211,415.11)	(\$39,921.36)	(\$122,765.19)	(\$26,239.42)	(\$97,925.72)	(\$74,331.18)
ANCILLARY SERVICES	\$1,155,212.47	\$1,070,018.14	\$1,100,235.48	\$962,496.19	\$948,107.18	\$940,935.74	\$896,143.70
TCC	\$2,241,915.48	\$1,297,367.23	\$1,788,598.56	\$1,047,635.09	\$736,715.72	\$629,191.31	\$396,260.81
	9	10	11	12	13	14	15
ENERGY	\$3,279,319.43	\$3,383,876.84	\$4,019,024.35	\$4,935,493.50	\$5,402,482.28	\$4,479,588.56	\$5,121,818.39
TRANSMISSION SERVICE	\$801,397.97	\$821,202.88	\$909,690.64	\$1,033,534.25	\$1,132,851.02	\$1,207,244.91	\$1,419,296.27
UPLIFT	\$42,814.60	\$79,214.00	\$37,754.65	\$58,044.96	\$87,096.52	\$72,218.80	\$47,455.85
RESIDUALS	(\$35,982.89)	\$2,760.79	\$83,068.62	\$79,023.27	(\$142,470.34)	(\$108,369.94)	\$34,882.99
ANCILLARY SERVICES	\$936,528.15	\$932,385.04	\$941,270.34	\$948,203.64	\$937,916.11	\$998,024.48	\$1,032,233.29
TCC	\$650,574.29	\$751,338.67	\$916,801.34	\$1,064,397.60	\$1,286,095.56	\$1,458,663.90	\$2,082,387.20
	16	17	18	19	20	21	22
ENERGY	\$6,667,231.69	\$7,745,837.73	\$9,705,530.10	\$8,506,146.83	\$5,658,688.80	\$4,712,621.59	\$5,367,555.90
TRANSMISSION SERVICE	\$1,390,382.67	\$1,355,613.56	\$1,411,152.46	\$1,844,033.72	\$1,375,998.91	\$859,019.05	\$1,027,322.64
UPLIFT	\$26,927.71	\$81,410.33	\$122,625.50	\$101,582.18	\$100,876.14	\$95,168.12	\$150,313.53
RESIDUALS	(\$34,597.76)	(\$97,998.95)	(\$92,861.08)	(\$58,215.25)	(\$34,625.83)	(\$162,800.62)	(\$160,769.23)
ANCILLARY SERVICES	\$1,055,453.64	\$1,070,621.22	\$1,166,117.30	\$1,170,673.94	\$1,072,085.75	\$963,535.02	\$959,671.48
TCC	\$2,361,129.43	\$1,747,232.40	\$1,653,658.67	\$2,998,831.25	\$2,074,449.83	\$682,756.56	\$1,070,313.11
	23	24	25	26	27	28	29
ENERGY	\$5,992,261.61	\$7,247,048.02	\$7,079,998.41	\$4,946,547.92	\$4,422,195.60	\$4,397,573.44	\$4,262,258.79
TRANSMISSION SERVICE	\$1,162,650.21	\$1,017,036.50	\$1,226,254.13	\$634,170.13	\$665,026.72	\$672,507.59	\$695,338.28
UPLIFT	\$91,238.75	\$55,624.78	\$60,547.06	\$96,199.34	\$80,875.19	\$69,008.18	\$74,361.62
RESIDUALS	(\$282,833.24)	(\$184,944.65)	(\$158,694.44)	(\$181,218.72)	(\$175,403.10)	(\$161,876.88)	(\$166,604.34)
ANCILLARY SERVICES	\$1,026,097.28	\$1,054,612.52	\$1,062,717.39	\$943,386.83	\$922,072.07	\$929,285.76	\$937,672.66
TCC	\$1,521,650.25	\$892,023.60	\$1,396,844.97	\$120,552.06	\$210,957.73	\$231,077.72	\$287,802.62
	30						
ENERGY	\$6,409,307.12						
TRANSMISSION SERVICE	\$862,192.50						
UPLIFT	\$126,147.59						
RESIDUALS	(\$249,921.21)						
ANCILLARY SERVICES	\$987,586.09						
TCC	\$477,142.49						



SETTLEMENTS REPORT  
November 2020 Settlement Adjustment  
December 7, 2020

Initial Settlement Adjustment – Market Costs Analysis

	MONDAY	TUESDAY	WEDNESDAY	THURSDAY	FRIDAY	SATURDAY	SUNDAY
ENERGY							1
TRANSMISSION SERVICE							\$7,226,713.42
UPLIFT							\$1,648,202.12
RESIDUALS							\$108,163.21
ANCILLARY SERVICES							(\$133,786.97)
TCC							\$1,092,032.21
							\$2,363,316.34
	2	3	4	5	6	7	8
ENERGY	\$8,734,997.17	\$8,305,883.91	\$7,038,473.51	\$4,745,947.14	\$4,008,676.31	\$2,993,326.21	\$2,175,998.70
TRANSMISSION SERVICE	\$1,492,817.91	\$1,298,488.53	\$1,350,791.32	\$1,058,907.43	\$870,888.31	\$786,466.64	\$655,149.41
UPLIFT	\$46,958.93	\$81,674.02	\$106,392.97	\$101,631.01	\$34,274.70	\$43,708.76	\$59,635.69
RESIDUALS	(\$208,869.36)	(\$211,312.55)	(\$39,950.49)	(\$122,482.40)	(\$25,537.92)	(\$97,896.71)	(\$74,331.15)
ANCILLARY SERVICES	\$1,156,005.59	\$1,070,015.28	\$1,100,264.00	\$962,472.79	\$948,022.81	\$940,932.21	\$896,144.19
TCC	\$2,241,915.48	\$1,297,367.23	\$1,788,598.56	\$1,047,635.09	\$736,715.72	\$629,191.31	\$396,260.81
	9	10	11	12	13	14	15
ENERGY	\$3,279,324.57	\$3,380,879.66	\$4,019,031.42	\$4,943,004.48	\$5,397,257.68	\$4,479,588.91	\$5,121,581.99
TRANSMISSION SERVICE	\$801,399.42	\$821,042.17	\$909,694.28	\$1,034,014.63	\$1,132,657.08	\$1,207,244.92	\$1,419,250.31
UPLIFT	\$42,814.60	\$79,214.01	\$37,754.65	\$58,080.73	\$87,096.51	\$72,218.80	\$47,455.85
RESIDUALS	(\$35,981.60)	\$5,764.87	\$83,070.92	\$80,426.25	(\$137,427.00)	(\$108,370.21)	\$35,133.45
ANCILLARY SERVICES	\$936,530.14	\$932,207.67	\$941,275.35	\$948,842.49	\$937,715.92	\$998,024.48	\$1,032,169.87
TCC	\$650,574.29	\$751,338.67	\$916,801.34	\$1,064,397.60	\$1,286,095.56	\$1,458,663.90	\$2,082,387.20
	16	17	18	19	20	21	22
ENERGY	\$6,667,241.23	\$7,745,837.73	\$9,705,530.10	\$8,506,146.83	\$5,661,683.41	\$4,712,621.59	\$5,367,555.90
TRANSMISSION SERVICE	\$1,390,382.22	\$1,355,613.56	\$1,411,152.46	\$1,844,033.72	\$1,376,043.26	\$859,019.05	\$1,027,322.64
UPLIFT	\$26,927.71	\$81,410.33	\$122,625.50	\$101,582.18	\$100,876.14	\$95,168.12	\$150,313.53
RESIDUALS	(\$34,599.46)	(\$97,998.95)	(\$92,861.08)	(\$58,215.25)	(\$33,661.67)	(\$162,800.62)	(\$160,769.23)
ANCILLARY SERVICES	\$1,055,453.10	\$1,070,621.22	\$1,166,117.30	\$1,170,673.94	\$1,072,164.37	\$963,535.02	\$959,671.48
TCC	\$2,361,129.43	\$1,747,232.40	\$1,653,658.67	\$2,998,831.25	\$2,074,449.83	\$682,756.56	\$1,070,313.11
	23	24	25	26	27	28	29
ENERGY	\$6,068,694.13	\$7,247,048.02	\$7,083,819.57	\$4,949,564.84	\$4,425,076.11	\$4,397,573.44	\$4,262,258.79
TRANSMISSION SERVICE	\$1,165,510.57	\$1,017,036.50	\$1,226,538.91	\$634,400.90	\$665,258.11	\$672,507.59	\$695,338.28
UPLIFT	\$95,091.37	\$55,624.78	\$60,547.06	\$96,199.35	\$80,875.19	\$69,008.18	\$74,361.62
RESIDUALS	(\$277,323.94)	(\$184,944.65)	(\$158,364.32)	(\$181,017.26)	(\$175,284.34)	(\$161,876.88)	(\$166,604.34)
ANCILLARY SERVICES	\$1,030,034.03	\$1,054,612.52	\$1,063,115.09	\$943,708.30	\$922,394.21	\$929,285.76	\$937,672.66
TCC	\$1,521,650.25	\$892,023.60	\$1,396,844.97	\$120,552.06	\$210,957.73	\$231,077.72	\$287,802.62
	30						
ENERGY	\$6,409,307.12						
TRANSMISSION SERVICE	\$862,192.50						
UPLIFT	\$126,147.59						
RESIDUALS	(\$249,921.21)						
ANCILLARY SERVICES	\$987,586.09						
TCC	\$477,142.49						

